



Friday 5<sup>th</sup> December 2025

# Newsletter 494

[www.gillespie.islington.sch.uk](http://www.gillespie.islington.sch.uk)



Dear Parents/Carers,

## Join your child for lunch week

A big thank you to our school cook Fatma and her catering team who worked hard throughout this week to ensure that we had extra lunches to accommodate our parent and carers joining their children for lunch. It was lovely to see children enjoying the company of their parents at lunch time and I had very positive feedback about the lunchtime experience. Please remember to support your children to fill in the school council pupil survey about school lunches because we want to have a dialogue with our catering company so we can see how we can provide the best possible lunches that children like and still meet our healthy eating expectations.

## REMINDER- School Council school meal pupil survey

We are the new school council and we are very determined to help improve the school lunches so that everyone is happy. We have organised a survey about our school meals which we hope all children will complete at home with help from their parents and carers.

There are two surveys, please select the one most applicable to your child. Only 1 survey to be completed per child. Please complete by extended deadline Wednesday 10<sup>th</sup> December.

Main menu – [meat and planet friendly days](#)

Main menu – [vegetarian](#)

## Year 4 Learning

Year 4 had a fantastic day learning all about the Ancient Greeks during our class trip this week. Students explored a range of fascinating artefacts and investigated what they reveal about life in ancient times. One of the most exciting discoveries was a Greek amphora decorated with a Minotaur design—a highlight that sparked lots of discussion and imagination! The children were engaged, curious, and wonderfully enthusiastic throughout the entire visit.



## Visit from Islington Tree Officer

Last week Michael Johnson, the Islington Tree Officer, visited Year 4 as it was National Tree Week. The pupils learnt a lot about trees and products from trees that relate to the Nativity and to Christmas decorations. They enjoyed handling and smelling cloves, sap, cinnamon, pine cones, star anise, myrrh and frankincense.

Meg, Lab\_13



### Christmas Show tickets

Families can now book their tickets to attend the 10am OR 2pm show. The shows will have children from Nursery to year 6 participating and it will be the **same show twice**. Due to very limited seating in the top hall, we can accommodate a maximum of 124 people per show. For this reason tickets are **limited to 2 per family**, we ask families to please be mindful of this. Tickets are available to book online and on a first come, first served basis. Once they are gone we are unfortunately unable to accommodate any further bookings. If you book a ticket and can no longer attend we ask that you release this back to the site. Thank you.



**BOOK YOUR TICKETS**

## The Muppet CHRISTMAS CAROL

**TICKETS LIMITED  
2 PER FAMILY**

FIRST COME FIRST SERVED

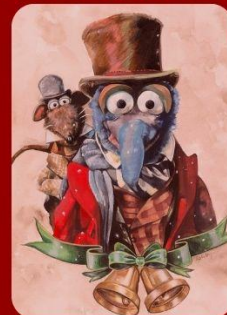
**BOOK HERE**

**[HTTPS://WWW.TICKETSOURCE.CO.](https://www.ticketsource.co.uk/gillespie-primary-school/e-zkyoqe)**

**UK/GILLESPIE-PRIMARY-**

**SCHOOL/E-ZKYOQE**

**TUESDAY  
16  
DECEMBER  
10AM OR 2PM**





# Early Years costume planning

Nursery and Reception will receive an email from Katy inviting children to wear all things Christmas. Clothing in red, green, gold, Christmas jumpers, tinsel, you name it!

## Years 1 – 6 costume planning!

It's that time of year when we look at costumes for our Christmas show! We've been working hard at school and it's looking really exciting! Here is some guidance and ideas for the kinds of clothes that would fit different characters. These are vague and you are welcome to do something a bit different if it fits your child's character. Please note that no one needs to go out and buy anything. It is quite possible to wear simple clothes to make the following costumes.

Narrators: Christmas jumpers or general Christmas colours (red, green and gold).



Rizzo: A blazer/smart jacket but if possible, made to look a bit 'ragged'. Also a hairband would be good with some mouse ears to go on (you could make them out of card/cardboard).



Scrooge: Victorian costume all in black (shirt, waistcoat, overcoat, trousers)



Bob Cratchit: Victorian clothes – Brown/blue (not black unless that's the only colour that is available).

Clerks (Year 1 scene): Victorian Clothes – Grey preferred.



Marley Brothers (Year 2 scene): A simple bedsheet to represent being a ghost.



Young Scrooge + Henry and Edmund (Y2): Gillespie Uniform (jumper and black trousers).

Headmaster (Y2): Black, smart clothes (short + dark coloured tie with a cloak and mortarboard type hat IF possible).

Ghost of Christmas Past (Y2 and Y3): All dressed in white -white dress/suit.



Fezziwig and Mrs Fezziwig (Y3): Party clothes – Red/yellow colours if available.

Salsa Girls (Y3): Latin type outfit

Hip Hop boys (Y3): Sports clothes and sunglasses.

Posh Guests (Y3): Victorian clothes – darker colours preferred.

Guests (Y3 + Y4): Colourful/Christmassy party clothes.



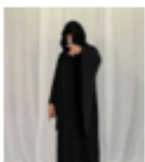
Ghost of Christmas Present (Y4 +Y5): Colourful red/gold clothes with a colourful cape.

Nephew Fred and the rest of the Cratchit family + the 'Street People' (Y4, 5 +6): Victorian clothes – slightly ragged if possible.

Too big or too small would be ideal to show they don't have money for nice clothes.

Gentlemen (Y6): Victorian Clothes – Smart.

Ghost of Christmas Future (Y6): Long black cloak to go over the face and body.



Please talk to me at home time or tell your child to speak with me if you're unsure what to wear. Best Wishes!  
Orlando

Full dress rehearsal for Christmas Show will be Monday 15<sup>th</sup> December. All children to have their costumes with them on Monday to stay at school for Tuesday.

## Ready Set Stage

Spring term clubs are now available to book online at [www.readysetstage.co.uk](http://www.readysetstage.co.uk).

Clubs begin week commencing 12<sup>th</sup> January and end week commencing 16<sup>th</sup> March.

<b>Monday</b>	<b>Tuesday</b>	<b>Wednesday</b>	<b>Thursday</b>
Performing Arts	Arts & Crafts	Singing club	Gymnastics
Football Y3-6	Chess club *NEW*	Football Rec-Y2	Table tennis (5 wks) *NEW*

### Attendance and Punctuality Matters

<b>Class</b>	<b>Attendance WB 01/12/25</b>
Reception	92.96%
Year 1	98.89%
Year 2	92.96%
<b>Year 3</b>	<b>99.26%</b>
Year 4	90.37%
Year 5	98.52%
Year 6	95.93%
<b>Total</b>	<b>95.56%</b>



Attendance Cup  
Winner  
WB 01/12/2025

**Year 3!**

<b>Important dates</b>	
<b>12<sup>th</sup> December</b>	3:15pm FoG's Warm up Fridays
<b>16<sup>th</sup> December</b>	10am & 2pm Christmas Shows 3:45pm FoG Christmas Fayre
<b>17<sup>th</sup> December</b>	PM Class Christmas parties & special guest...
<b>18<sup>th</sup> December</b>	Christmas Jumper Day & Christmas dinner
<b>19<sup>th</sup> December</b>	Last day of term. <b>School closes 1pm</b>
<b>Monday 5<sup>th</sup> January</b>	INSET Day (school closed)
<b>Tuesday 6<sup>th</sup> January</b>	First day of spring term for pupils

Yours sincerely,  
Mark Owen,  
Headteacher



## Silent Auction Parent Pledges - What is your secret skill?

It's that time of year when Jacqui is on the hunt for skills, talents, goodies and more as we start to build up our offer for the Winter Fair Silent Auction. This is a huge fundraiser around the Winter Fair (**previous years have seen us raise close to £4000** for the school - that would cover the cost of the Strings Music Programme and School trips for an entire term!

The aim is to collect as many prizes as possible and offer them up for bids as part of a Silent Auction on the night of the Fair. But for that we need you. Perhaps you can offer to **bake a cake, cook a signature dish, hold a masterclass in your secret skills (hair plaits, poker, singing, music, make-up, photography, gardening, DIY, legal advice, personal training...)** or maybe there is something you could donate that would make a lovely gift (**hampers, bottles of anything, vouchers, tickets to a show...**). The more we have the better the auction will be. If you have something, want to know more or are ready to donate, **please message Jacqui on 07900188328**. Thanks!



## Volunteers for the Winter Fair - the more the merrier...

To make the Winter Fair a success we need people power. No special skills required - just a lot of goodwill and festive cheer to sell tokens before the Christmas shows, set up or take down stalls, decorations, inflatable snowmen and more. Even if it is just half an hour at some point during the day we will be very appreciative. **Message Sean on 07986 792 367 or speak to your class rep about getting involved.**



## Winter Fair Kit - all donations welcome!



We want to make the school hall and playground look as festive as possible this year for the fair and also the school's legendary Christmas dinner, so anyone that has some **spare fairy lights, tinsel, garlands, bows, fake snow, inflatable snowmen, Santa hats, reindeer antlers etc.** then please drop them in to the front office. If you want them returned and then please put them in a bag with your name and details on them so we can make sure you get them back in time for your own festive displays!

## School partnership with HotBlack Desiato

Since the Spring Term, Gillespie Primary has been in a formal partnership with the local Estate agent HotBlack Desiato. This sponsorship (to the amount of £500.00 a month for 12 months) has provided a fantastic boost to the existing FoG offer. If that wasn't enough, they have also **committed to making a donation of 10% of any fees generated via Gillespie Primary School straight back to FoG**, so please spread the word!



## Ways to Support Friends of Gillespie and the school community

1. **Financial donations:** A monthly direct debit donation of any amount you choose can be set up [here](#) in less than 5 mins, or you can use this QR code to access the site.
2. **Item donations:** Speak to your class rep about delivering the items, or simply drop them in the front office for a FoG member to come and collect them. Easy!
3. **Time donations:** If you would like to help out in this way then please do get in touch with your class rep or a FoG Committee member - we will certainly have something for you to do!

