



Friday 10th November 2023

Newsletter 416

www.gillespie.islington.sch.uk



@GillespieSchool

Dear Parents/Carers,

Ofsted inspection this week

Thank you so much for all your support and survey feedback this week. The report will be shared when available, hopefully before the Christmas break. The result is confidential until then. Parents will have seen how positive the parent feedback was from the parent survey on Ofsted Parent View. Thanks to FoG for sharing the link and reminding families to complete.



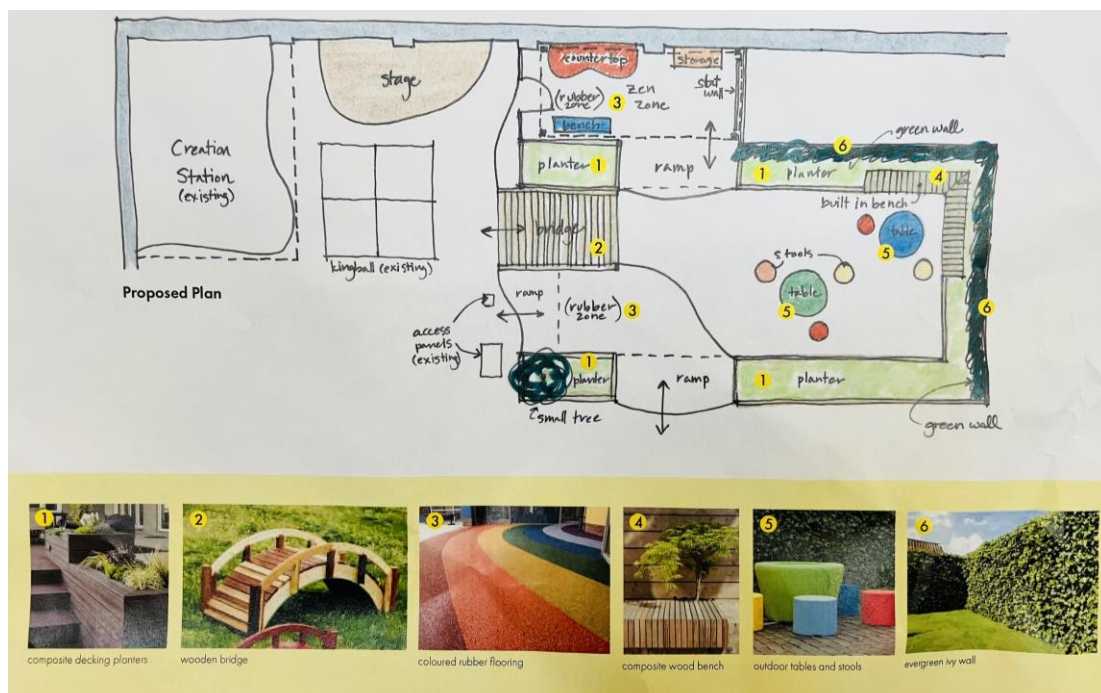
Remembrance & Diwali Assembly

Today we marked the national Remembrance Day with a special assembly. With particular thoughts for civilians affected by conflicts both past and present. We also celebrated Diwali and Pam one of our wonderful TA's and some of our pupils shared their personal celebrations for Diwali and we wish all of our Hindu and Sikh families a happy Diwali.



£55,000 grant awarded for Gillespie Garden project!

We are excited to announce that our local Islington ward have granted almost £55,000 to enable us to rejuvenate our garden and playground area. We have raised the money with the support of our wonderful PTA and in particular ex-parent Liz Dodd who supported FoG with capital grant applications. Thanks also to parent Erin Upton-Hansen who produced a vision plan to help secure the funding. The space will create further opportunities for all of our children including our children with complex special needs to play and learn dynamically. Parents will have noticed that our garden area, which when it was first built in 2010 after a previous funding application, was a lovely garden classroom has unfortunately fallen in to a state of disrepair. Using our plan as a starting point we are excited to be consulting with our pupil leader groups- School Council, Eco Committee, Playground Buddies, Travel Ambassadors and Science Committee who will be working together to ensure their aims for the school and ideas for the area are incorporated in to the final outcome. As part of the funding, we have already secured £5,000 from the Rose Foundation which will be focussed on building a brand new bike park in a different part of the playground so that we can open up the garden area and link it up with our Creation Station. Watch this space!

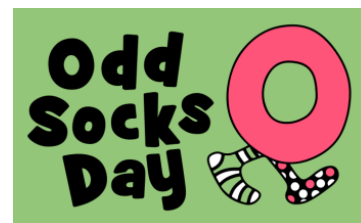




Anti-Bullying Week – 13th – 17th November

It's Anti-Bullying Week next week and theme this year is 'Make A Noise About Bullying'. The theme is based on urging adults and children alike to come together to have discussions about what we mean by bullying behaviour, how we can tell the difference between 'banter' and bullying and how we can make changes to reduce bullying. Together, we

can make a difference if we make a noise to stop bullying. To celebrate this week we would like children to come in **odd socks on Monday** to showcase fun and laughter, but more importantly they deliver a message of individuality, acceptance and tolerance. Then on Friday we invite children to dress in stripes or spots for our annual Children in Need day. Donations can be made via our Just Giving page here: <https://tinyurl.com/mrxw9u2y>



Year 1 Class Assembly

Year 1 have been looking at how black people who have lived in The United Kingdom have helped to develop music and change people's thoughts about each other.

We looked at Dandy Livingstone's song Rudy, a Message to You and wrote about what we could hear and how it made us feel. We then learnt that this song was in the Rocksteady style of music. We discovered what types of music helped to make this new style of music. We then compared Dandy Livingstone's version of Rudy, a Message to You to The Specials' version of it and talked about what was similar and different to it and what music influenced the Ska Revival sound that The Specials played in. We learnt how The Specials, along with other bands in the 1970s used music to make people more aware of the problems people were having in The UK at the time.



Year 5 Learning

Year 5 did some Thames pollution searching this week and were lucky to do it in fabulous weather!



Attendance Matters!

Class	Attendance WB 06/11/23
Reception	98.67%
Year 1	98.33%
Year 2	97%
Year 3	93.33%
Year 4	99%
Year 5	98.67%
Year 6	96.43%
Whole school	97.35%

Attendance Cup
Winner
Week Beginning
06/11/2023
Year 4



Ongoing reminders

Class assemblies

Thursdays at 2:30pm, top hall. Families invited to attend, we hope you can make it!

16 th November	Year 3
23 rd November	Year 6
30 th November	Year 4
7 th December	Year 5

Admissions Information

Primary School Admissions for children born between: 1 September 2019 and 31 August 2020

- Apply online at www.eadmissions.org.uk
- Deadline 15th January 2024
- To arrange a school tour please email the school office
- See the Islington Admission's [Primary School brochure here](#)
- Children in the Nursery Class do NOT automatically have a place in Reception Class. Families **must** apply online.

Diary Dates

Date	Event
WKBG 13 th November	Anti-bullying week
Friday 1 st December	Y4 Christmas bake sale & uniform stall
Wednesday 6 th December	2:00-7:00pm Parent Consultation Meetings
Wednesday 13 th December	FoG Carol singing bucket shake
Tuesday 19 th December	Christmas dinner
Wednesday 20 th December	10am & 2pm Christmas Shows 3:30pm FoG Winter Fair
Thursday 21 st December	Last day of Autumn term. School closes 2pm

Yours sincerely,
Mark Owen Headteacher



Sunday November 19 from 4 – 6 pm

You are invited to Messy Church at St Thomas's Church on Sunday 19 November from 4 – 6 pm when we will "Light up the Darkness". It's a jam-packed afternoon for all ages and stages including themed crafts, activities, and story-telling with a meal too, and it's all free!

St Thomas's Church is on the corner of St Thomas's Road and Monsell Road.

CONNECTIONS & CONVERSATIONS

ENGLISH CONVERSATION GROUP

For adults with English as a foreign language

Practise in a friendly space

Develop your language skills and confidence

Fridays 12.30-2pm (starts 17 November)

Elizabeth House
2 Hurlock Street
London N5 1ED

Refreshments provided
FREE & FUN!

TO REGISTER OR FOR MORE INFORMATION
EMAIL: INFO@ELIZABETH-HOUSE.ORG.UK
CALL: 020 7690 1300

An illustration of a group of people sitting on a brown sofa and chairs in a relaxed setting, talking and drinking coffee. There is a potted plant on the left and a small table with coffee cups in the center.



OFSTED Visit - Huge thanks

As everyone will know, Gillespie was visited by OFSTED this week for a full inspection. **FoG wanted take the chance to say thank you to all of the class reps** who supported the school in collecting as many views and comments via the parent voice survey, **and to all those who were able to complete them.** With over 130 surveys completed it was an excellent demonstration of the committed parents and carers network that we have, and will no doubt have provided the inspectors with some really useful insight for their report.



Dates for your diary

Below is a summary of all of the FoG events for the Autumn and Spring Terms :

Fri	17-Nov-2023		CHILDREN IN NEED (Non FoG event)
Fri	1-Dec-2023	15:30-16:30	Y4 Christmas Bake Sale & Uniform Sale
Wed	16-Dec-2023	14:00-15:00	Carol Singing Bucket Shake
Wed	20-Dec-23	tbc	Winter Fair
Spring Term			
Wed	24-Jan-2024	09:00-10:00	FOG Spring Term General Meeting
Fri	2-Feb-2024		NSPCC NUMBER DAY (Non FoG event)
Fri	9-Feb-2024	15:00 - 16:00	Year 3 Valentines Bake Sale & Uniform Sale
Thur	29-Feb-2024	15:30-18:00	Movie Night
Fri	15-Mar-2024		COMIC RELIEF (Non Fog event)
Fri	22-Mar-2024	15:00 - 16:00	Year 2 St Patrick's Bake Sale & Uniform Sale
Wed	27-Mar-2024	09:00 - 10:00	Open FoG Meeting

Make a note of any events you might want to attend or get involved in - we will always welcome the support!



Gillespie Primary School Festive Card Project



Remember, you can still place orders for these items, but will now need to pay for postage and packaging. If you have any questions about the project or how to make purchases, please email Mary (the real brains behind this operation) marydecinque@gmail.com.

Remember, you can support FoG through a one-off or regular donation

Direct Donations

All money raised by FoG goes towards support for the school and extra-curricular activities for Gillespie children. There is no obligation to give and it can be as much or as little as you can afford. **To donate, click here or scan the QR code on the noticeboard next to the playground gates.**